

## Model: CDDK20

Heavy Duty

AC

EPS



\* photo shown for CDDK20 triplex mast

1KG=2.205LB 1INCH=25.40MM

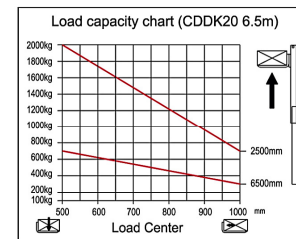
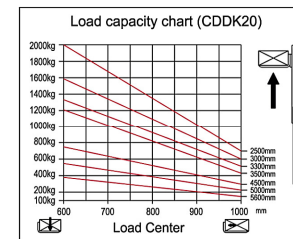
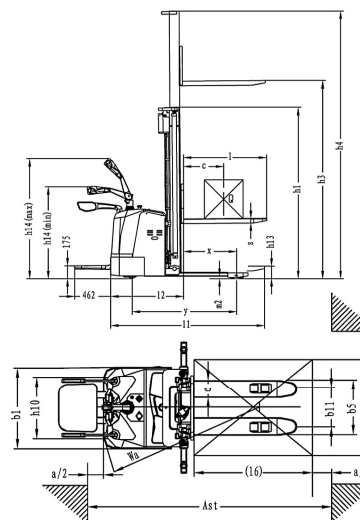
Model		CDDK20	CDDK20(6.5m)
Load capacity	Q(kg)	2000	2000
Load center	c(mm)	600	500
Load distance	x(mm)	672	672
Tyre size, front	mm	φ 250×70	φ 250×70
Tyre size, rear	mm	φ 80×84	φ 80×84
Additional wheels (dimensions)	mm	φ 150×60	φ 150×60
Wheels, number front rear(x=driven wheels)		1x+2/4	1x+2/4
Height, mast lowered	h1(mm)	1735/1985/2135/2235/2050/2210/2410	2710
Free lift	h2(mm)	~ / ~ / ~ / ~ / 1570/1740/1940	2240
Max. Lift height	h3(mm)	2500/3000/3300/3500/4500/5000/5600	6500
Height, mast extended	h4(mm)	2955/3455/3755/3955/5030/5510/6110	7050
Height of tiller in drive position min./max.	h14(mm)	1150/1450	1150/1450
Fork height, lowered	h13(mm)	90	90
Overall length	l1(mm)	2020/2100	2100/2180
Length to face of forks	l2(mm)	950	950
Overall width	b1(mm)	850	950
Fork dimensions	s/e/l(mm)	60/180/1070(1150)	60/180/1070(1150)
Width overall forks	b5(mm)	570/695	570/695
Aisle width for pallets 800x1200 lengthways	Ast(mm)	2515	2595
Turning radius	Wa(mm)	1655	1735
Travel speed, laden/unladen	Km/h	5.8/6	5.8/6
Lift speed, laden/unladen	m/s	0.09/0.11	0.09/0.11
Lowering speed, laden/unladen	m/s	0.12/0.11	0.12/0.11
Battery voltage, nominal capacity K5	V/Ah	24/300	24/300
Battery weight	kg	300	300
Battery dimensions l/w/h	mm	675×254×500	675×254×500
Service weight(with battery)	kg	1280/1320/1350/1640/1680/1720/2020	1850

\*Option: CDDK20(6.5m) with fork width of 695mm without stabilizer.

Max. Lifting  
Height 6.5M



CDDK20(6.5M) Special Heavy Duty type Stacker with strong chassis base and high load capacity at high lifting height.



### Advantages:

- #### Safety And Productivity
- AC Motor eliminates replacement of carbon brush.
  - Multi-function display with BDI and hour meter.
  - Side way battery is easy to maintain.
  - Damping cushion for low-noise operation;
  - Emergency reversing device in the handle provides higher safety for the whole operation.
  - Auto deceleration function makes operation more safely.
  - Built-in pressure relief valve protects the trucks from overloads, increases the reliability.
  - Braking applied with handle upright and horizontal position, increasing the safety of the truck.
  - Emergency power disconnect switch.
  - Turtle-shaped low speed switch.
  - Stepless speed control.
  - Supporting legs in both sides for triplex mast (Duplex mast without supporting legs).

#### Optimum Structural Design

- Low center of gravity ensures the stable operation.
- Vertical driving wheel ensures convenient maintenance and small turning radius. Water-proof and dust-proof motor structure, keeps the braking and motor more durable and reliable.
- The mast and the frame are dividable and exchangeable.
- Full free lifting, fit for working in low roof house.

#### Serviceability

- Low voltage protection setting prolongs the battery life time.
- The electronic components' concentrated design simplify the circuit and makes easy access to assemble, debug and maintain.
- CANbus technology reduces wiring complexity and increase reliability.
- Hall element reduces wear components, resulting in increased component life.